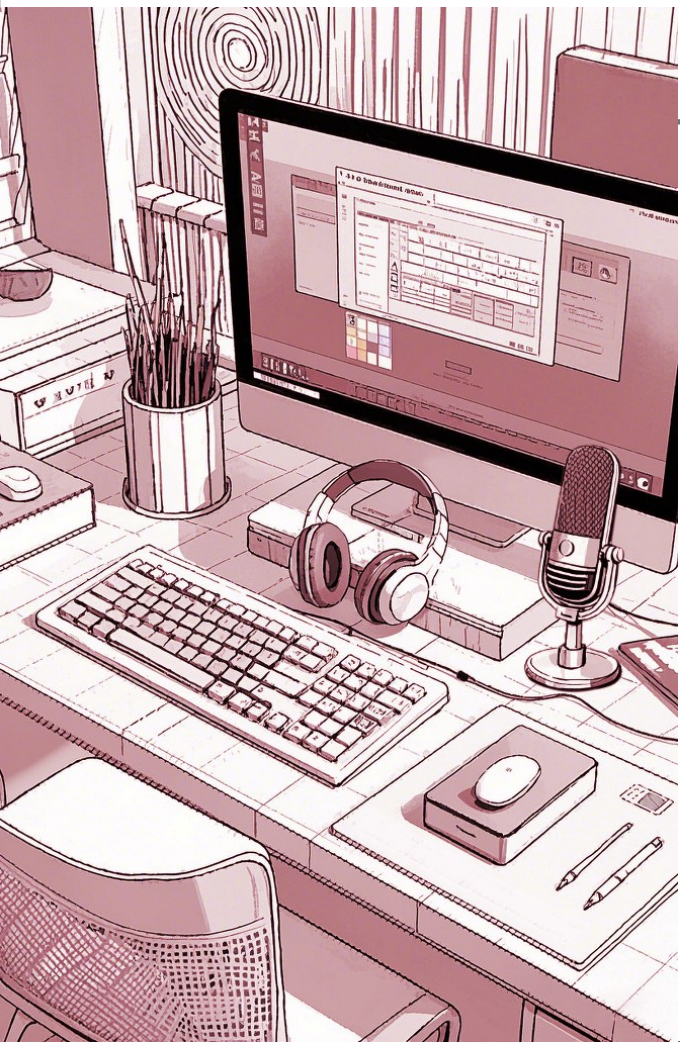


VCOM | 

2026
HKTDC

VCOM PRODUCT CATALOG





Contents

■ Creator's Command Center	
High-speed Transfer Series.....	2
Micphone & Camera Accessories	3
■ High-Speed USB-C Connectivity Solution	
USB-C Cable.....	6
USB Adapter.....	17
■ Audio & Video Series	
HDMI Cable.....	25
HDMI Adapter.....	27
DP Cable.....	34
■ Network Cable Series	
Network Cable.....	36

CREATOR'S Command Center



CU855SN-F



M.2 NVMe SSD Enclosure with Fingerprint Access

USB Version: USB 3.2 GEN2 Protocol: NVMe & SATA
 Data Transfer Speed: Up to 10Gbps Max Capacity: 8TB
 SSD Compatibility: M.2 NVMe M Key & B+M Key SSD
 Supported SSD SIZE: 2230/2242/2280 Power Retention Time: < 1s
 LED Indicators: Power indicator, Operating status indicator
 Encrypted: Fingerprint Encryption
 Compatible system: Windows, Mac OS, Android
 material: Aluminum Shell



CU874N



USB4 M.2 NVMe SSD Enclosure

USB4 SSD Enclosure for M.2 PCI-E NVMe Protocol 40G
 Supported SSD SIZE: 2280
 Color: Gray, material: Aluminum Shell



CU876N



Thunderbolt 5/USB4 V2.0 Compatible 80Gbps M.2 NVMe SSD Enclosure

Color: Gray Host Connectors: 1x USB Type-C
 Plug and Play: Yes Material: Aluminum Alloy
 Cable Type: Type-C to Type-C Built-in Silent Fan: Yes
 Compatible Systems: Windows, Mac OS, Android
 Data Transfer Speed: 80Gbps, 10Gbps
 (When connected to a non-Thunderbolt USB-C Host)
 Compatibility: Thunderbolt 4/3, USB4/USB3.2 Gen2



CU857R



Dual-Bay 20Gbps M.2 NVMe SSD Enclosure with RAID Support

Material: Aluminum Alloy
 Compatible Systems: Windows, Mac OS, Linux
 Cable Type: USB-C to USB-C
 Data Transfer Speed: 20Gbps, compliant with USB 3.2 Gen standard, with peak read and write speeds up to 2000MB/s, and a 2GB file can be transferred in about 1 second
 Compatibility: Supports M.2 NVMe 2280 SSD only, up to 8TB per drive
 Built-in Silent Fan: Yes Net Weight: 140g
 Working Modes: Supports RAID 0, RAID 1, LARGE, and PM Mode



YOUR FINGER IS YOUR KEY

Fingerprint Encryption SSD Enclosure

CU856N



Magnetic Portable SSD

Port Type: USB Type-C
 Data Transfer Speed: Up to 20 Gbps
 Cable Type: USB-C to USB-C
 Power Requirement: 5V
 Material: Aluminum Shell
 Compatibility: iOS, Windows, Android, macOS

USB Version: USB 3.2 Gen2x2
 Storage: 512GB, 1TB, 2TB
 Cable Length: 65mm
 Plug and Play: Yes



USB RGB Microphone with Boom Arm



M902B

USB RGB Microphone with Boom Arm

Pointing Heart shaped pointing
 Frequency Response 30-20KHz
 Sensitivity -40 dB±3dB
 Signal-to-Noise Ratio > 79dB
 Sampling Rate 48kHz-192kHz
 Compatible Systems Windows,
 Android, macOS
 Pop Filter Included
 RGB Lighting Support
 Port USB 2.0 TYPE-C Female
 Cable length 1.8m
 Cable Type USB-A TO USB-C Cable
 Power Source DC 5V
 Weight 0.5 kg
 Material ABS body



RGB Light Modes Touch Button Accurate sound pickup No Distortion



M905

USB RGB Microphone

Microphone capsule size: 14mm
 Polar Pattern/Frequency Response: 40-18,000Hz
 Sensitivity: -37 dBV/Pa
 Maximum SPL: 124 dB (THD < 1% @ 1kHz)
 Signal-to-Noise Ratio (SNR): 80 dB
 Power Supply: USB Power Supply (5V DC)
 Bit Depth: (16bit) / (24bit @ Windows 10)
 Recording Sample Rate: 48/96/192KHz
 Playback Sample Rate: 48KHz Stereo
 Total Harmonic Distortion (THD): < 0.8%
 (@ 1kHz)
 Compatible Systems: Apple (macOS/iOS),
 Android, Windows, Linux"



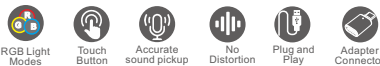
RGB Light Modes Touch Button Accurate sound pickup No Distortion



M909

USB/XLR Dynamic Microphone

Power Supply: USB Power Supply (5V DC) / 48V Phantom Power
 Microphone Core: Dynamic Microphone Core
 Polar Pattern: Supercardioid
 Sensitivity: -50dB ± 2dB (0dB = 1V/Pa) (at 1KHz), tested with BK Tester
 Signal-to-Noise Ratio (SNR): 78dB
 Frequency Response: 50Hz - 15kHz
 System Compatibility: Apple, Android, WINDOWS, LINUX
 Bit Depth: (16bit) / (24bit @ WIN10)
 Recording Sample Rate: 48/96/192KHz
 Playback Sample Rate: 48KHz Stereo
 Total Harmonic Distortion (THD): < 0.8% (at 1KHz)
 Maximum SPL: 110dB (THD < 1% at 1KHz)
 Material: Microphone: ABS + Metal Stand
 Port: USB-C, 3.5mm, XLR
 Color: Black



RGB Light Modes Touch Button Accurate sound pickup No Distortion Plug and Play Adapter Connector



YOUR BEST SELFIES

NOW FROM THE BACK CAMERA



M952S

Vlog Selfie Monitor Screen

16:9 (3.97-inch) IPS Display, 250 cd/m² Brightness, 480 × 800 60Hz
Contrast: 700:1 (typical)
Colors: 16.7K (60% NTSC)
Buttons: Power, Aspect Ratio, Screen Flip, Brightness
Battery: 1500 mAh (3 hours wireless battery life)
Ports: USB-C (power)
Weight: 106 g
Dimensions: 105x62x10mm
Available Color: White
Compatibility: iOS 9.0+, Android 2.0+, HarmonyOS 3.0+, etc.
Includes: 2x USB-C cables, remote, magnet strip, adapter



M953

Vlog Selfie Monitor Screen

3:4:3 (3.97-inch) IPS Display, 300 cd/m² Brightness, 296 × 240 60Hz
Contrast: 1200:1 (typical)
Colors: 16.7K (72% NTSC)
Buttons: Power, Aspect Ratio, Screen Flip, Brightness
Battery: 760 mAh (2 hours wireless battery life)
Ports: USB-C (power)
Weight: 50 g
Dimensions: 72x60x11.8mm
Available Color: Black
Compatibility: iOS 9.0+, Android 2.0+, HarmonyOS 3.0+, etc.
Includes: USB-A to USB-C cable, Magnetic attachment sheet, Cloth bag



M621

Gaming Audio Mixer

Audio: BP1049B2 chip, 20Hz–20kHz frequency response, THD $\sim 0.05\%$, $\geq 105\text{dB}$ dynamic range, $\geq 85\text{dB}$ SNR, 48kHz/16-bit (also supports 44.1kHz), Headphone output: 20mW @32 Ω .

Connectivity: USB-C (data + power), DC 5V/1A input, Bluetooth 5.0 (some variants: 4.2)
Inputs: XLR/TRS mic, 3.5mm TRRS mic (disables XLR), AUX IN.
Outputs: 3.5mm headphone + LINE OUT.

Features: 4 voice changers, 5 scene modes, adjustable reverb, 3-level noise reduction, sidechain ducking, zero-latency monitoring, loopback, Bluetooth media controls, RGB lighting (solid/gradient/rainbow).

Controls: 6 programmable sound keys, 2 effect keys, 13 function keys, mute toggles (mic/accompaniment), dual faders (mic/music), knobs (gain/reverb/volume), switches (power/48V phantom/BT).



WCOOM



M911

2.4G Wireless Lavalier Microphone (Type-C Plug & Play)

Core Specifications:
 Chipset Brand: Bluetooth
 Input Voltage: 5V
 Microphone Battery Capacity: 60mAh
 Charging Case Capacity: 300mAh Lithium Battery
 Working Time: 6-7 Hours
 Latency: 30ms
 Transmission Distance: 20-30m (Barrier-Free)
 Signal-to-Noise Ratio: 70dB
 Sensitivity: -42dB
 Frequency Response: 20Hz-20kHz
 Polar Pattern: Omnidirectional



M911B

2.4G Wireless Lavalier Microphone with Stand (Type-C Plug & Play)

Core Specifications:
 Chipset Brand: Bluetooth
 Input Voltage: 5V
 Microphone Battery Capacity: 60mAh
 Charging Case Capacity: 300mAh Lithium Battery
 Working Time: 6-7 Hours
 Latency: 30ms
 Transmission Distance: 20-30m (Barrier-Free)
 Signal-to-Noise Ratio: 70dB
 Sensitivity: -42dB
 Frequency Response: 20Hz-20kHz
 Polar Pattern: Omnidirectional



USB-C

The Future of Connectivity

240W

8K
240W

CU580M



USB4 V2 Cable

Fast Charging: 240W / 100W
 Audio & Video Transmission: Dual-screen Resolution
 4K@60Hz / 5K@60Hz; Single-screen Resolution 8K@60Hz
 USB Data Transfer Speed: 80Gb/s
 Compatible with TB13 / TB14; High-Speed Cable
 (USB-C M/M, Aluminum Shell Version, Nickel-Plated CM Plug)



CU582RA



USB4 V2.0 240W L-Type Cable

TYPE-CM/CM
 Straight-to-Center-Symmetrical 90°
 Full-Function High-Speed
 Flat Cable
 Bandwidth: 80Gbps
 Maximum video resolution: 8K@60Hz
 L=0.8m
 240W | Aluminum Shell + TPE Jacket, Nickel-Plated



CU583



USB4 V2.0 240W Extension Cable

TYPE-CM/CF
 Full-Function High-Speed
 Flat Extension Cable
 Bandwidth: 80Gbps
 Maximum video resolution: 8K@60Hz
 L=0.13m
 240W | Aluminum Shell + TPE Jacket, Nickel-Plated



CU584M



USB4 V2.0 80G Cable 1M

Transmission Protocols:
 USB4 V2.0 + Thunderbolt 5 (backward compatible with
 Thunderbolt 4/3, USB4/3.2, DisplayPort 2.1, PCIe Gen4)
 Data Transfer Rate:
 Bidirectional 80 Gbps / Unidirectional 120 Gbps
 (video bandwidth)
 Power Delivery:
 240 W PD100W 3.1 (48 V/5A), backward compatible with
 180 W / 140 W / 100 W profiles
 Note: Device must support PD100W 3.1 specification
 Video Output:
 Supports 16K @ 60 Hz / 8K @ 60 Hz / 4K @ 240 Hz (via DP 2.1 Alt Mode)



CU581



USB4 V2.0 240W Cable Portable Keychain

TYPE-CM/CM
 Full-Function High-Speed
 Flat Cable
 Bandwidth: 80Gbps
 Maximum video resolution: 8K@60Hz
 Keychain design
 L=0.2m
 240W | Aluminum Shell + TPE Jacket, Nickel-Plated



CU582RC



USB4 V2.0 240W L-Type Cable

TYPE-CM/CM
 Straight-to-Right-Angle 90°
 Full-Function High-Speed
 Flat Cable
 Bandwidth: 80Gbps
 Maximum video resolution: 8K@60Hz
 L=0.13m
 240W | Aluminum Shell + TPE Jacket, Nickel-Plated



CU582RD



USB4 V2.0 240W L-Type Cable

TYPE-CM/CM
 Straight-to-Right-Angle 90°
 Full-Function High-Speed
 Flat Cable
 Bandwidth: 80Gbps
 Maximum video resolution: 8K@60Hz
 L=0.13m
 240W | Aluminum Shell + TPE Jacket, Nickel-Plated



CU545



USB4/Thunderbolt 4 240W Magnetic Coaxial Cable (Self-Coiling Edition)

Connector Type: TYPE-C (Male/Male)
 Coaxial Design, Nickel-Plated
 Self-Coiling via Magnetic
 Cable Length: 1 m
 Data Transmission: Thunderbolt 4 & USB4 Dual Protocol Support,
 40Gbps (Gen 3)
 Video Support: DP Alt Mode (8K@60Hz, 4K@120Hz)
 Power Delivery: PD 3.1 EPR, 240W (50V/5A)
 Fast Charging Protocols: PD3.1, PD3.0, OC4+, PPS



CU580

USB4 V2 Cable

USB-C/CM

Cable Construction: (USB4.0: 30*#(1/0.288C*2C + Inner Sheath + Aluminum Foil + Hot-Melt Mylar)*4C + (1/0.20BC + PP)*1P + (1/0.20BC + PP)*4C + (32/0.10TC + PP)2C + D26/0.10TC1 + Double-Sided AL + 144#/0.08TC
Full-Function High-Speed
Bandwidth: 80Gbps
Maximum video resolution: 8K 60Hz
L=2m
240W | Aluminum Shell + PVC Jacket, Gold-Plated



CU490

USB-C to DisplayPort 2.1 cable

USB-C to DP 2.1 16K Display Cable
Version: DP 2.1 (Backward Compatible with DP 1.4, DP 1.2, DP 1.0)
Bandwidth: 40Gbps
Refresh Rate: 16K@30Hz, 8K@60Hz, 4K@240/144/120/60/30Hz, 2K@240/144/120/60Hz, 1080P@360/240/120/60Hz
Housing: Aluminum
Outer Sheath: TPE + Black Braided Mesh
Connector: Gold-Plated Connector
Packaging: Color Box Packaging



CU510D

USB-C 100W Magnetic Cable (Self-Coiling Edition) with Digital Display

USB-C/CM

Self-Coiling Magnetic
Bandwidth: 480 Mbps

L = 1 m

OD=3.9mm

100W | Zinc Shell + Nickel-Plate

Available Lengths: 1m, 1.5m, 1.8m

Charging, Data Transfer, and OTG Support

Real-time monitoring with auto-switching display for Voltage (V), Current (A), and Power (W)



CU510Ds

USB-C 60W Magnetic Cable (Self-Coiling Edition) with Digital Display

USB-C/CM

Self-Coiling Magnetic
Bandwidth: 480 Mbps

L = 1 m

OD=3.9mm

60W | Zinc Shell + Nickel-Plate

Available Lengths: 1m, 1.5m, 1.8m

Charging, Data Transfer, and OTG Support

Real-time monitoring with auto-switching display for Voltage (V), Current (A), and Power (W)



CU510

USB-C 100W Magnetic Cable (Self-Coiling Edition)

USB-C/CM

Self-Coiling Magnetic, with Indicator

Bandwidth: 480 Mbps

L = 1 m

OD=3.9mm

100W | Zinc Shell + Nickel-Plate

Available Lengths: 1m, 1.5m, 1.8m



CU511

USB-C 100W Magnetic Cable (Self-Coiling Edition)

USB-C/CM

Self-Coiling Magnetic

Bandwidth: 480 Mbps

L = 1 m

OD=3.9mm

100W | Zinc Shell + Nickel-Plate

Available Lengths: 1m, 1.5m, 1.8m



CU511As

USB-A to USB-C 60W Magnetic Cable (Self-Coiling Edition)

USB-AM/CM

Self-Coiling Magnetic

Bandwidth: 480 Mbps

L = 1 m

OD=3.9mm

60W | Zinc Shell + Nickel-Plate

Available Lengths: 1m, 1.5m, 1.8m



CU512

USB-C to USB-C/A 100W Max Magnetic Cable (Self-Coiling Edition)

USB-AMCM/CM

Self-Coiling Magnetic

Bandwidth: 480 Mbps

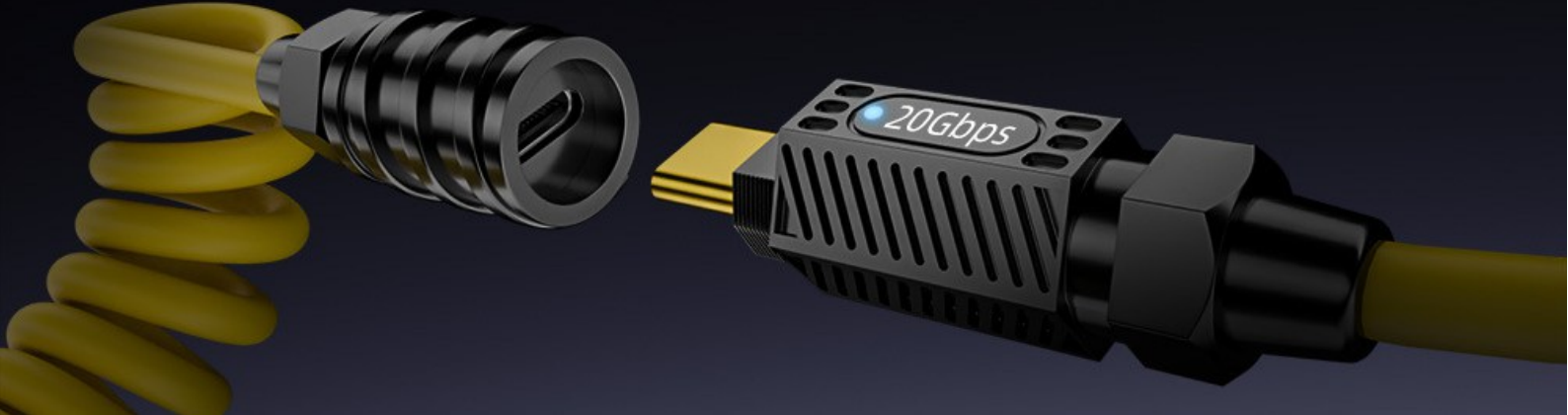
L = 1 m

OD=3.9mm

100W | Zinc Shell + Nickel-Plate

Available Lengths: 1m, 1.5m, 1.8m





CU522SC

USB4 Spring Coiled, 140W,20Gbps,8K@60Hz

TYPE-CM/CF
 Straight Connector, Blue Indicator, with Twist-lock
 Full-Function High-Speed
 Spring Coiled Cable
 Bandwidth: 20Gbps
 Maximum video resolution: 8K@60Hz
 L=1.8m
 OD=5.7mm
 140W | Zinc Shell + PVC Jacket, Gold-plated



20 Gbps | 140W | 8K 60Hz

CU523SC

USB4 Spring Coiled, 140W,20Gbps,8K@60Hz

TYPE-CM/CM
 Straight Connector, Blue Indicator, with Twist-lock
 Full-Function High-Speed
 Spring Coiled Cable
 Bandwidth: 20Gbps
 Maximum video resolution: 8K@60Hz
 L=1.8m
 OD=5.7mm
 140W | Zinc Shell + PVC Jacket, Gold-plated



20 Gbps | 140W | 8K 60Hz

CU522

USB4 , 140W,20Gbps,8K@60Hz

TYPE-CM/CF
 Straight Connector, Blue Indicator, with Twist-lock
 Full-Function High-Speed
 Bandwidth: 20Gbps
 Maximum video resolution: 8K@60Hz
 L=1m
 OD=5.7mm
 140W | Zinc Shell + PVC Jacket, Gold-plated



20 Gbps | 140W | 8K 60Hz

CU523

USB4 , 140W,20Gbps,8K@60Hz

TYPE-CM/CM
 Straight Connector, Blue Indicator, with Twist-lock
 Full-Function High-Speed
 Bandwidth: 20Gbps
 Maximum video resolution: 8K@60Hz
 L=1m
 OD=5.7mm
 140W | Zinc Shell + PVC Jacket, Gold-plated



20 Gbps | 140W | 8K 60Hz

CU513

USB2.0 ,100W 480 Mbps

USB-CM/CM
Straight Connector
With a non-slip grip for easy unplug
Bandwidth: 480 Mbps
L=2m
100W | Aluminum Shell + TPE Jacket, Nickel-Plated



CU514B

USB2.0 Neck Strap , 240W, 480Mbps

Connector Type: Dual (USB-C + USB-A) to Dual (USB-C + Lightning)
Straight Connector
Bandwidth: 480Mbps
L=1.2m
OD:5.7mm
Net weight: 103g
Neck Strap Design
240W(C to C);18W(A to C);10W(A to L);27W(C to L) |
Zinc Shell + Cotton Jacket, Nickel-Plated
Available Color: Orange



CU505B

USB-C to USB-C Braided, 60W, 480Mbps

USB-C/CM
Straight Connector, Nylon Braided Cable
Bandwidth: 480Mbps
Cable color: Orange
Core structure: 5-core, 50/0.082 + 10/0.083
L=1m
Net weight:30g
OD=3.1mm
60W | ABS Shell + Nylon Braided Jacket,
Nickel-plated



CU505F

USB-C 60W Cable

TYPE-CM/CM
Straight Connector
Flat Cable
Bandwidth: 480Mbps
L=1.2m
Net weight: 35g
60W | Aluminum Shell + TPE Jacket, Nickel-Plated
Available Color: Orange



M169

Magnetic wireless charger for iPhone (MagSafe compatible)

Maximum output power: 25 W
Supports MagSafe charging for iPhone 12 and later models



CU515

USB4 Spring Coiled Cable with Extension, 140W, 480Mbps

Spring Coiled Cable Connector Type: Dual (USB-C + Lightning)
to Dual (USB-C + USB-A)
Extension Connector Type: USB-C to USB-C/Micro-USB/Lightning
Straight Connector
Spring Coiled Cable
Bandwidth: 480Mbps
L=1.2m
Net weight:97g
OD=5.7mm
140W | Zinc Shell + PVC Jacket, Gold-plated



CU505Bs

USB-C 60W Cable

TYPE-CM/CM
Straight Connector
Bandwidth: 480Mbps
L=1m
OD:4.6mm
Net weight: 34g
60W | ABS Shell + ABS Jacket, Nickel-Plated
Available Color: Orange



CU505Fs

USB-C 60W Magnetic Cable (Self-Coiling Edition)

TYPE-CM/CM
Straight Connector
Self-Coiling Magnetic
Flat Cable
Bandwidth: 480Mbps
L=1.2m
Net weight: 48g
60W | Aluminum Shell + TPE Jacket, Nickel-Plated
Available Color: Orange

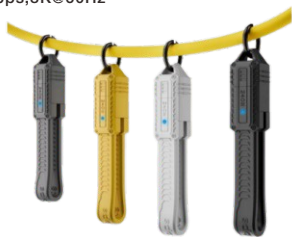




CU585

USB4 V2.0 Portable Keychain 240W,80Gbps,8K@60Hz

TYPE-CM/CM
Straight Connector,Blue Indicator
Full-Function High-Speed
Flat Cable
Bandwidth: 80Gbps
L=0.12m
Net weight: 11g
Maximum video resolution: 8K@60Hz
Keychain design
240W | TPE Shell + TPE Jacket, Nickel-Plated
Available Color:Gray, Black, Yellow, White



CU514D

USB2.0 Portable Keychain , 240W, 480Mbps

Connector Type: Dual (USB-C + Lightning) to Dual (USB-C + USB-A)
Straight Connector
Flat Cable
Bandwidth: 480Mbps
L=0.15m
Net weight: 21g
Keychain design
240W(C to C); 10W(A to L); 27W(C to L) | Aluminum Shell + TPE Jacket,
Nickel-Plated
Available Color: Dark Blue, Black, Dark Red
Real-time monitoring with auto-switching display for Voltage (V),
Current (A), and Power (W)



CU514

USB2.0 Portable Keychain , 60W,480Mbps

Connector Type: Dual (USB-C + Lightning) to Dual (USB-C + USB-A)
Straight Connector
Flat Cable
Bandwidth: 480Mbps
L=0.15m
Net weight: 30g
Keychain design
60W(C to C); 18W(A to C); 10W(A to L); 27W(C to L) | Aluminum Shell
+ TPE Jacket, Nickel-Plated
Available Color:Blue, Black, Purple, Rose Gold



CU516

Invisible Holder Charger Cable with Stand

Material: Zinc Alloy + Aluminum Alloy + TPE + 48-Strand Braided Cable
Color: Black
Cable Length: 1m / 1.5m / 2m
Transfer Speed: 480Mbps
Interface & Output Power: Type-C to Type-C, 240W



CU546Hb

Lighter Magnetic Charging Cable, 240W, USB2.0

USB-A to USB-C + USB-C to USB-C + USB to Lighter
Magnetic Foldable Design
USB-A to USB-C: USB2.0, 480 Mbps, QC 18W, 9V/2A
USB-C to USB-C: USB2.0, 480 Mbps, PD3.1 240W
USB to Lighter: Blow-Activated, 5V/1A, 5W,
Auto-Off in 10 Seconds
Total Length: 18cm
Folded Length: 8.5cm
Flat Cable, Cotton Braided
Aluminum Alloy Shell, Nickel-Plated Connectors
Available Colors: Orange



CU546Ls

Lighting Magnetic Charging Cable, 240W, USB2.0

USB-A to USB-C + USB-C to USB-C + USB-C to Lighting
Magnetic Foldable Design
USB-A to USB-C: USB2.0, 480 Mbps, QC 18W, 9V/2A
USB-C to USB-C: USB2.0, 480 Mbps, PD3.1 240W
USB-C to Lighting: 5V/1A, 5W
Total Length: 18cm
Folded Length: 8.5cm
Flat Cable, Cotton Braided
Aluminum Alloy Shell, Nickel-Plated Connectors
Available Colors: Orange



CU546HLb

Lighter + Lighting Magnetic Charging Cable, 240W, USB2.0

USB-C to USB-C + USB-C to Lighting + USB-C to Lighter
Magnetic Foldable Design
USB-C to USB-C: USB2.0, 480 Mbps, PD3.1 240W
USB-C to Lighting: 5V/1A, 5W
USB-C to Lighter: Blow-Activated, 5V/1A, 5W,
Auto-Off in 10 Seconds
Total Length: 18cm
Folded Length: 8.5cm
Flat Cable, Cotton Braided
Aluminum Alloy Shell, Nickel-Plated Connectors
Available Colors: Orange



CU547

USB4 Portable Keychain, 240W, 40Gbps, 8K

USB-CM/CM
Straight Connector
Full-Function High-Speed
Supports PD3.1 Fast Charging + 40Gbps Data Transfer
Output: 48V/5A, 28V/5A, 20V/5A, 9V/2A, 5V/3A
Chipset: CH5389
Maximum Video Resolution: 8K
L=0.115m
Flat Cable, TPE, with Keychain
240W | Aluminum Shell, Nickel-Plated
Available Colors: Black, White, Yellow, Orange



CU546H

Lighter Magnetic Charging Cable, 240W, USB4

USB-A to USB-C + USB-C to USB-C + USB to Lighter
Magnetic Foldable Design
USB-A to USB-C: USB2.0, 480 Mbps, QC 18W, 9V/2A
USB-C to USB-C: USB4, 40 Gbps, PD3.1 240W
USB to Lighter: Blow-Activated, 5V/1A, 5W,
Auto-Off in 10 Seconds
Total Length: 18cm
Folded Length: 8.5cm
Flat Cable, Cotton Braided
Aluminum Alloy Shell, Nickel-Plated Connectors
Available Colors: Orange



CU546L

Lighting Magnetic Charging Cable, 240W, USB4

USB-A to USB-C + USB-C to USB-C + USB-C to Lighting
Magnetic Foldable Design
USB-A to USB-C: USB2.0, 480 Mbps, QC 18W, 9V/2A
USB-C to USB-C: USB4, 40 Gbps, PD3.1 240W
USB-C to Lighting: 5V/1A, 5W
Total Length: 18cm
Folded Length: 8.5cm
Flat Cable, Cotton Braided
Aluminum Alloy Shell, Nickel-Plated Connectors
Available Colors: Orange



CU546HL

Lighter + Lighting Magnetic Charging Cable, 240W, USB4

USB-C to USB-C + USB-C to Lighting + USB-C to Lighter
Magnetic Foldable Design
USB-C to USB-C: USB4, 40 Gbps, PD3.1 240W
USB-C to Lighting: 5V/1A, 5W
USB-C to Lighter: Blow-Activated, 5V/1A, 5W,
Auto-Off in 10 Seconds
Total Length: 18cm
Folded Length: 8.5cm
Flat Cable, Cotton Braided
Aluminum Alloy Shell, Nickel-Plated Connectors
Available Colors: Orange



CU542

Thunderbolt 4, 240W, 40Gbps, 16K

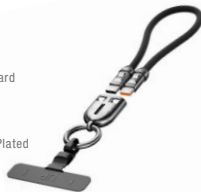
USB-CM/CM
Straight Connector
Full-Function High-Speed
Solution: CPS8821
Protocol: PD3.1 EPR 240W
Bandwidth: 40 Gbps
Supports: 16K@60Hz
Black Nylon Braided
Gold-Plated Connectors
OD=5.4mm



CU502A

3-in-1 Hollow Lanyard Cable, 240W, 480Mbps

USB-CM/CM
Straight Connector
Supports PD 240W Fast Charging + Data Transfer
Output: 48V/5A, 28V/5A, 20V/5A, 9V/2A, 5V/3A
Bandwidth: 480 Mbps
Supports Laptop Charging and Can Be Used as a Phone Lanyard
L=1.2m/0.3m
Cable Specification: 65*0.1mm*3+15*0.08mm*2
OD=5.0mm
Nylon Braided
240W I Zinc Alloy Connectors + Zinc Alloy Keychain, Nickel-Plated
Available Colors: Black, Purple (Customizable), Orange



CU502C

Oval Spring-Clasp Lanyard Cable, 240W, 480Mbps

USB-CM/CM
Straight Connector
Supports PD 240W Fast Charging + USB2.0 Data Transfer
Output: 48V/5A, 28V/5A, 20V/5A, 9V/2A, 5V/3A
Supports Laptop Charging and Can Be Used as a Phone Lanyard
L=0.3m
Cable Specification: 65*0.1mm*3+15*0.08mm*2
OD=5.0mm
Nylon Braided
240W I Zinc Alloy Connectors + Zinc Alloy Spring Clasp, Nickel-Plated
Available Colors: Black, Purple, Orange



480 Mbps

CU548G

Thunderbolt 4 Magnetic Cable (Self-Coiling Edition)
240W, 40Gbps, 8K

USB-CM/CM
Magnetic Connector, with Indicator Light
Full-Function High-Speed
Protocol: PD3.1 EPR 240W
Bandwidth: 40 Gbps
Supports: 8K@60Hz
L=1.2m
PVC Shell + Dual-Color Braided Cable
Nickel-Plated Connectors
OD=4.5mm



40 Gbps

CU481B

USB-C to HDMI Cable, 8K@60Hz

USB-C/HDMI
Straight Connector
Supports: 8K@60Hz
Gold-Plated
Aluminum Shell Braided
OD=5.5mm



CU502B

Rugby Lanyard Charging Cable, 240W

USB-CM/CM
Straight Connector
Supports PD 240W Fast Charging + USB2.0 Data Transfer
L=0.14m
Cable Specification: 65*0.1mm*3+15*0.08mm*2
OD=5.0mm
Nylon Braided
240W I Zinc Alloy Connectors + Zinc Alloy Keychain, Nickel-Plated
Available Colors: Black, Purple, Orange



CU410V

VR Link Charging Cable, 5Gbps

USB-AM/CM
90° Right-Angle Connector
Supports Play-and-Charge Without Power Drop
Function: 5Gbps + 9V/2A Charging
L=5m
OD=5.5mm
White PVC, Tinned Copper
Dual-Color Molding
Packaging: Special VR Cable Bag, 22.5*21cm
Net weight: 216g
Carton: 46*30*30cm, 50pcs/ctn, 11kg



5 Gbps

CU548

Thunderbolt 4 Cable, 240W, 40Gbps, 8K

USB-CM/CM
Straight Connector, with Indicator Light
Full-Function High-Speed
Protocol: PD3.1 EPR 240W
Bandwidth: 40 Gbps
Supports: 8K@60Hz
L=1.2m
PVC Shell + Dual-Color Braided Cable
Nickel-Plated Connectors
OD=4.5mm



40 Gbps

CU481C

USB-C to HDMI Cable, 8K@60Hz

USB-C/HDMI
Straight Connector
Supports: 8K@60Hz
Gold-Plated
Aluminum Shell Braided
OD=5.5mm
Length: 1-3m



CU481F

USB-C to HDMI Female Adapter 8K@60Hz

USB-C/HDMI F
Adapter
Supports: 8K@60Hz
Golden Plated
Aluminum Alloy Shell Braided
OD=5.5mm

8K
60Hz



CU463F

USB-C to HDMI Female Adapter 4K@60Hz

USB-C/HDMI F
Adapter
Supports: 4K@60Hz
Golden Plated
Aluminum Alloy Shell Braided
OD=5.5mm

4K
60Hz



CU483D

USB-C to DisplayPort Cable 8K@60Hz / 4K@144Hz

USB-C/DP
Straight Connector
Supports: 8K@60Hz / 4K@144Hz
Gold-Plated connector
Aluminum Shell
Braided Cable
Construction: [(1/0.254BC*1P+FAM)*4P+1/0.254BC*4C+1/0.404BC*2C+FAM+D1/0.254+B128/0.12AM]*1P PVC
OD=5.5mm

8K
60Hz



CU483FA

USB-C to Mini DisplayPort Adapter Cable 8K@60Hz

USB-C/Mini DP
Adapter
Supports: 8K@60Hz
Gold-Plated connector
Aluminum Shell
Braided Cable
Construction: [(1/0.254BC*1P+FAM)*4P+1/0.254BC*4C+1/0.404BC*2C+FAM+D1/0.254+B128/0.12AM]*1P PVC
OD=5.5mm

8K
60Hz



CU463A

USB-C to HDMI Cable 4K@60Hz

USB-C/HDMI
Straight Connector
Supports: 4K@60Hz
Golden Plated
Aluminum Alloy Shell Braided
OD=5.5mm
Length: 1-3m

4K
60Hz



CU482B

USB-C to DisplayPort Cable 8K@60Hz / 4K@144Hz

USB-C/DP
Straight Connector
Supports: 8K@60Hz / 4K@144Hz
Gold-Plated connector
Aluminum Shell
Braided Cable
Construction: [(1/0.254BC*1P+FAM)*4P+1/0.254BC*4C+1/0.404BC*2C+FAM+D1/0.254+B128/0.12AM]*1P PVC
OD=5.5mm
Length: 1-3m

8K
60Hz



CU483F

USB-C to DisplayPort Female Adapter Cable 8K@60Hz

USB-C/DP F
Adapter
Supports: 8K@60Hz
Gold-Plated connector
Aluminum Shell
Braided Cable
Construction: [(1/0.254BC*1P+FAM)*4P+1/0.254BC*4C+1/0.404BC*2C+FAM+D1/0.254+B128/0.12AM]*1P PVC
OD=5.5mm

8K
60Hz



CU483E

USB-C to DisplayPort Adapter Cable 4K@60Hz

USB-C/DP
Straight Connector
Supports: 4K@60Hz
Gold-Plated connector
Aluminum Shell
Braided Cable
Construction: [(1/0.254BC*1P+FAM)*4P+1/0.254BC*4C+1/0.404BC*2C+FAM+D1/0.254+B128/0.12AM]*1P PVC
OD=5.5mm

4K
60Hz



CU464A

USB-C to DisplayPort Cable, 4K@60Hz

USB-C/DP
Straight Connector
Supports: 4K@60Hz
Gold-Plated Connector
Aluminum Shell
Braided Cable
Construction: [(1/0.254BC*1P+FAM)*4P+1/
0.254BC*4C+1/0.404BC*2C+FAM+D1/0.254
+B128/0.12AM]*1P PVC
OD=5.5mm
Length: 5m

4K
60Hz



CU466A

USB-C to VGA Adapter Cable, 1080P@60Hz

USB-C/VGA
Adapter
Supports: 1080P@60Hz
Gold-Plated Connector
Grey Aluminum Shell
Black and Grey Cotton Braided Mesh
Construction: [(0.254BC+FPED.72)*1P+AL]*2C+
(0.254BC+HDPE0.60)*6C+(0.511BC+HDPE0.90)*2C
+AL+D0.254BC+B80/0.12AM+PVC5.5mm



CU580AD

USB4 Type-C to Type-C Cable 240W with Digital Display

USB-CM/CM
Straight Connector, with Digital Display
Full-Function High-Speed
Supports: 40Gbps + 240W + 8K@60Hz
Aluminum Alloy + Grey Nylon Braided
+ Twisted Pair + Built-in Chip
Shell: Gray Blue

240W **40**
Gbps **8K**
60Hz



CU580E

USB4 Type-C Side Bend Cable 240W

USB-CM/CM
Side Bend Connector
Full-Function High-Speed
Supports: 40Gbps + 240W + 8K@60Hz
Aluminum Alloy + Gray Blue Checkered Mesh
+ Twisted Pair + Built-in Chip
Shell: Gray Blue

240W **40**
Gbps **8K**
60Hz



CU465A

USB-C to DVI Cable

USB-C/DVI
Straight Connector
Supports: 1080P@60Hz + 4K@30Hz
24+1
Gold Plated
AL Shell Braided Cable
Construction: [(0.254BC+FPED.72)*1P+AL]*2C+
(0.254BC+HDPE0.60)*6C+(0.511BC+HDPE0.90)*2C
+AL+D0.254BC+B80/0.12AM+PVC5.5mm
Length: 1-3m

4K
30Hz



CU580BD

USB4 Type-C to Type-C Cable 240W with Digital Display

USB-CM/CM
Straight Connector, with Digital Display
Full-Function High-Speed
Supports: 40Gbps + 240W + 8K@60Hz
Aluminum Alloy + Grey Nylon Braided
+ Twisted Pair + Built-in Chip
Shell: Gray Blue

240W **40**
Gbps **8K**
60Hz



CU580FA

USB4 Type-C Male to Female Extension Cable 240W

USB-CM/CF
Straight Connector
Full-Function High-Speed
Supports: 40Gbps + 240W + 8K@60Hz
Aluminum Alloy + Gray Blue Checkered Mesh
+ Twisted Pair + Built-in Chip
Shell: Gray Blue

240W **40**
Gbps **8K**
60Hz



CU584A

USB4 V2 Type-C to Type-C Cable 240W

USB-CM/CM
Straight Connector
Full-Function High-Speed
Supports: 120Gbps + 240W + 16K@60Hz
Twisted Pair
Aluminum Alloy + Gray Blue Checkered Mesh
+ Twisted Pair + Built-in Chip 8821F
Shell: Gray Blue

240W **120**
Gbps **16K**
60Hz



CU440C

USB-C to 2RCA Cable

USB-C/2RCA
Straight Connector
Gold-Plated
Aluminum Shell Braided
Construction: (7/0.12BC+HDPE0.80)*3C
+AL+B80/0.12CCS+PVC
OD=3.5mm



CU421D

USB-C to DVI Female Adapter Cable

USB-C/DVI F
Adapter
Supports: 1080P@60Hz + 4K@30Hz
24+1
Gold Plated
Aluminum Shell Braided
Construction: [(0.254BC+FPED.72)*1P+AL]*2C+
(0.254BC+HDPE0.60)*6C+(0.511BC+HDPE0.90)*2C
+AL+D0.254BC+B80/0.12AM+PVC5.5mm



CU440F

USB-C to 3.5 Female Adapter Cable

USB-C/3.5 F
Adapter
Gold-Plated
Aluminum Shell Braided
Construction: (7/0.12BC+HDPE0.80)*3C+AL
+B80/0.12CCS+PVC
OD=3.5mm



CU440B

USB-C to 6.35MM Cable

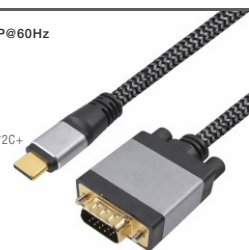
USB-CM/CM
Straight Connector
Full-Function High-Speed
Supports: 40Gbps + 240W + 8K60Hz
Aluminum Alloy + Gray Blue Checkered Mesh
+ Twisted Pair + Built-in Chip
Shell: Gray Blue



CU421A

USB-C to VGA Adapter Cable 1080P@60Hz

USB-C/VGA
Adapter
Supports: 1080P@60Hz
Gold-Plated Terminal
Grey Aluminum Shell
Black and Grey Cotton Braided Mesh
Construction: [(0.254BC+FPED.72)*1P+AL]*2C+
(0.254BC+HDPE0.60)*6C+(0.511BC
+HDPE0.90)*2C+AL+D0.254BC+B80/
0.12AM+PVC5.5mm
Length: 1-3m



CU440A

USB-C to 3.5MM Cable

USB-C/3.5MM
Straight Connector
Gold-Plated
Aluminum Shell Braided
Construction: (7/0.12BC+HDPE0.80)*3C
+AL+B80/0.12CCS+PVC3.5mm



CU440AP

USB-C to 3.5MM with PD Cable

USB-C/3.5MM
Straight Connector
With PD Charging
Gold-Plated
Aluminum Shell Braided
Construction: (7/0.12BC+HDPE0.80)*3C
+AL+B80/0.12CCS+PVC3.5mm



CU580B

USB4 Type-C to Type-C Cable , 240W

USB-CM/CM
Straight Connector
Full-Function High-Speed
Supports: 40Gbps + 240W + 8K@60Hz
OD=5.5
Aluminum Alloy + Grey Nylon Braided
+ Twisted Pair + Built-in Chip
Shell: Grey Blue





USB Adapter Series

CA461

USB-C to USB-C Adapter, 100W, 20Gbps

USB-CM/CF
Full-Function High-Speed (Bidirectional)
U-Shaped Connector(11mm Gap), with Indicator
Bandwidth: 20 Gbps
Maximum video resolution: 4K@60Hz
100W Aluminium shell, Nickel-Plated
Available Color: Space Gray, Silver

Charging, Data Transfer, and OTG Support



TYPE-C (M)

DU704CA

USB Extension adapter, 15W power supply, 10Gbps

USB-CF/AF
Straight Connector, with Indicator
Bandwidth: 10 Gbps
15W Enhance power supply| Aluminium shell,
Nickel-Plated
Available Color: Space Gray, Silver

Data Transfer, and OTG Support
Signal extension: 10m



DU704CC

USB Extension adapter, 15W power supply, 10Gbps

USB-CF/CF
Straight Connector, with Indicator
Bandwidth: 10 Gbps
15W Enhance power supply| Aluminium shell,
Nickel-Plated
Available Color: Space Gray, Silver

Data Transfer, and OTG Support
Signal extension: 10m



CA482A

Lightning to USB-C Adapter, 35W, 480 Mbps

Lightning M/CF
Straight Connector, with Indicator
Bandwidth: 480 Mbps
35W | PC shell, Nickel-Plated
Available Color: Smoke Black

Charging, Data Transfer, and OTG Support



CA461B

USB-C to USB-A Adapter, 15W, 10Gbps

USB-CM/AF
U-Shaped Connector(11mm Gap), with Indicator
Bandwidth: 10 Gbps
15W | Aluminium shell, Nickel-Plated
Available Color: Space Gray, Silver

Data Transfer, and OTG Support



TYPE-C (M)

DU704AC

USB Extension adapter, 15W power supply, 10Gbps

TYPE-AF/CF
Straight Connector, with Indicator
Bandwidth: 10 Gbps
15W Enhance power supply| Aluminium shell,
Nickel-Plated
Available Color: Space Gray, Silver

Data Transfer, and OTG Support
Signal extension: 10m



CA481A

USB-C to USB-C Adapter, 240W, 40Gbps

USB-CM/CF
Full-Function High-Speed (Bidirectional)
Straight Connector, with Indicator
Bandwidth: 40 Gbps
Maximum video resolution: 8K@60Hz
240W | PC shell, Nickel-Plated
Available Color: Smoke Black

Charging, Data Transfer, and OTG Support



CA483A

Lightning to USB-C Adapter, 35W, 480 Mbps

Lightning F/USB-CM
Straight Connector, with Indicator
Bandwidth: 480 Mbps
35W | PC shell, Nickel-Plated
Available Color: Smoke Black

Charging, Data Transfer, and OTG Support



USB Adapter

CA480AD

USB-C to USB-A Adapter, 36W, 10 Gbps

USB-CM/AF
Straight Connector
Bandwidth: 10 Gbps
36W I PC shell, Nickel-Plated
Available Color: Smoke Black, Black

Charging, Data Transfer, and OTG Support
Real-time monitoring with auto-switching display for Voltage (V), Current (A), and Power (W)



CA485AD

USA-A to USB-C Adapter, 36W, 10 Gbps

TYPE-AM/CF
Straight Connector
Bandwidth: 10 Gbps
36W I PC shell, Nickel-Plated
Available Color: Smoke Black, Black

Charging, Data Transfer, and OTG Support
Real-time monitoring with auto-switching display for Voltage (V), Current (A), and Power (W)



CA481AD

USB-C to USB-C Adapter, 140W, 40 Gbps

USB-CM/CF
Full-Function High-Speed (Bidirectional)
Straight Connector
Bandwidth: 40 Gbps
Maximum video resolution: 8K@60Hz
140W I PC shell, Nickel-Plated
Available Color: Smoke Black

Charging, Data Transfer, and OTG Support
Real-time monitoring with auto-switching display for Voltage (V), Current (A), and Power (W)



CA481UD

USB-C to USB-C Adapter, 140W, 40 Gbps

USB-CM/CF
Full-Function High-Speed (Bidirectional)
U-Shaped Connector
Bandwidth: 40 Gbps
Maximum video resolution: 8K@60Hz
140W I PC shell, Nickel-Plated
Available Color: Smoke Black

Charging, Data Transfer, and OTG Support
Real-time monitoring with auto-switching display for Voltage (V), Current (A), and Power (W)



CA484AD

USB-A to USB-A Adapter, 36W, 10 Gbps

TYPE-AM/AF
Straight Connector
Bandwidth: 10 Gbps
36W I PC shell, Nickel-Plated
Available Color: Smoke Black, Black

Charging, Data Transfer, and OTG Support
Real-time monitoring with auto-switching display for Voltage (V), Current (A), and Power (W)



CA486AD

USB-C to USB-A Adapter, 36W, 10 Gbps

USB-CF/AF
Straight Connector
Bandwidth: 10 Gbps
36W I PC shell, Nickel-Plated
Available Color: Smoke Black, Black

Charging, Data Transfer, and OTG Support
Real-time monitoring with auto-switching display for Voltage (V), Current (A), and Power (W)



CA481BD

USB-C to USB-C Adapter, 140W, 40 Gbps

USB-CM/CF
Full-Function High-Speed (Bidirectional)
Straight-to-Right-Angle 90° Connector
Bandwidth: 40 Gbps
Maximum video resolution: 8K@60Hz
140W I PC shell, Nickel-Plated
Available Color: Smoke Black

Charging, Data Transfer, and OTG Support
Real-time monitoring with auto-switching display for Voltage (V), Current (A), and Power (W)



CA481CD

USB-C to USB-C Adapter, 140W, 40 Gbps

USB-CM/CF
Full-Function High-Speed (Bidirectional)
Straight-to-Center-Symmetrical 90° Connector
Bandwidth: 40 Gbps
Maximum video resolution: 8K@60Hz
140W I PC shell, Nickel-Plated
Available Color: Smoke Black

Charging, Data Transfer, and OTG Support
Real-time monitoring with auto-switching display for Voltage (V), Current (A), and Power (W)



CA483BD

Lighting to USB-C Adapter , 35W, 480 Mbps

Lightning F/USB-CM
Straight-to-Center-Symmetrical 90° Connector
Bandwidth: 480 Mbps
35W I PC shell, Nickel-Plated
Available Color: Smoke Black

Charging, Data Transfer, and OTG Support
Real-time monitoring with auto-switching display for Voltage (V), Current (A), and Power (W)



CA482BD

USB-C to lighting Adapter , 35W, 480 Mbps

USB-CF/Lighting M
Straight-to-Center-Symmetrical 90° Connector
Bandwidth: 480 Mbps
35W I PC shell, Nickel-Plated
Available Color: Smoke Black

Charging, Data Transfer, and OTG Support
Real-time monitoring with auto-switching display for Voltage (V), Current (A), and Power (W)



CA487AD

USB-C to USB-C Adapter , 140W, 40 Gbps

USB-CM/CM
Full-Function High-Speed (Bidirectional)
Straight Connector
Bandwidth: 40 Gbps
Maximum video resolution: 8K@60Hz
140W I PC shell, Nickel-Plated
Available Color: Smoke Black

Charging, Data Transfer, and OTG Support
Real-time monitoring with auto-switching display for Voltage (V), Current (A), and Power (W)



CA488AD

USB-C to USB-C Adapter, 140W, 40 Gbps

USB-CF/CF
Full-Function High-Speed (Bidirectional)
Straight Connector
Bandwidth: 40 Gbps
Maximum video resolution: 8K@60Hz
140W I PC shell, Nickel-Plated
Available Color: Smoke Black

Charging, Data Transfer, and OTG Support
Real-time monitoring with auto-switching display for Voltage (V), Current (A), and Power (W)



CA445A

USB-C to USB-C Adapter, 100W, 40 Gbps

TYPE-CM/CF
Full-Function High-Speed (Bidirectional)
N52-grade neodymium magnet Straight Connector
Bandwidth: 40 Gbps
Maximum video resolution: 8K@60Hz
100W I Aluminum shell, Gold-plated
Available Color: Space Gray

Charging, Data Transfer, and OTG Support



CA445D

USB-C to USB-C Adapter L-Type, 100W, 40 Gbps

TYPE-CM/CF
Full-Function High-Speed (Bidirectional)
N52-grade neodymium magnet Connector,
Straight-to-Center-Symmetrical 90° Connector
Bandwidth: 40 Gbps
Maximum video resolution: 8K@60Hz
100W I Aluminum shell, Gold-plated
Available Color: Space Gray

Charging, Data Transfer, and OTG Support



CA445C

USB-C to USB-C Adapter L-Type, 100W, 40 Gbps

TYPE-CM/CF
Full-Function High-Speed (Bidirectional)
N52-grade neodymium magnet Connector,
Straight-to-Right-Angle 90° Connector, with Indicator
Bandwidth: 40 Gbps
Maximum video resolution: 8K@60Hz
100W I Aluminum shell, Gold-plated
Available Color: Space Gray

Charging, Data Transfer, and OTG Support



CA445U

USB-C to USB-C Adapter U-Shaped, 100W, 40 Gbps

TYPE-CM/CF
Full-Function High-Speed (Bidirectional)
N52-grade neodymium magnet U-Shaped Connector
Bandwidth: 40 Gbps
Maximum video resolution: 8K@60Hz
100W I PC, Gold-plated
Available Color: Space Gray

Charging, Data Transfer, and OTG Support



CA445B

USB-C to USB-C Adapter L-Type, 100W, 40 Gbps

TYPE-CM/CF
Full-Function High-Speed (Bidirectional)
N52-grade neodymium magnet Connector,
Straight-to-Right-Angle 90° Connector, with Indicator
Bandwidth: 40 Gbps
Maximum video resolution: 8K@60Hz
100W | PC, Gold-plated
Available Color: Space Gray

Charging, Data Transfer, and OTG Support



CA463A

Micro-USB to TYPE-C Adapter

Micro-USB F/CM
Straight Connector, with lanyard hole
Bandwidth: 480 Mbps
18W | Aluminum, Nickel-Plated
Available Color: Space Gray

Charging, Data Transfer, and OTG Support



CA464B

TYPE-C to Lightning Adapter

Type-CF/Lightning M
Straight Connector, with lanyard hole
Bandwidth: 480 Mbps
35W | Aluminum, Nickel-Plated
Available Color: Space Gray

Charging, Data Transfer, and OTG Support



CA466A

TYPE-C to Mini-USB Adapter

Type-CF/Mini-USB M
Straight Connector, with lanyard hole
Bandwidth: 480 Mbps
15W | Aluminum, Nickel-Plated
Available Color: Space Gray

Charging, Data Transfer, and OTG Support



CA445E

USB-C to USB-C Adapter L-Type, 100W, 40 Gbps

TYPE-CM/CF
Full-Function High-Speed (Bidirectional)
N52-grade neodymium magnet Connector,
Straight-to-Center-Symmetrical 90° Connector,
with Indicator & Lanyard hole
Bandwidth: 40 Gbps
Maximum video resolution: 8K@60Hz
100W | Aluminum shell, Gold-plated
Available Color: Space Gray

Charging, Data Transfer, and OTG Support



CA464A

Lightning to TYPE-C Adapter

Lightning F/CM
Straight Connector, with lanyard hole
Bandwidth: 480 Mbps
35W | Aluminum, Nickel-Plated
Available Color: Space Gray

Charging, Data Transfer, and OTG Support



CA465A

Micro-USB to Lightning Adapter

Micro-USB F/Lightning M
Straight Connector, with lanyard hole
Bandwidth: 480 Mbps
18W | Aluminum, Nickel-Plated
Available Color: Space Gray

Charging, Data Transfer, and OTG Support



CA467A

Micro-USB to Mini-USB Adapter

Micro-USB F/Mini-USB M
Straight Connector, with lanyard hole
Bandwidth: 480 Mbps
15W | Aluminum, Nickel-Plated
Available Color: Space Gray

Charging, Data Transfer, and OTG Support



CA463B

TYPE-C to Micro-USB Adapter

Type-C/Micro-USB M
Straight Connector, with lanyard hole
Bandwidth: 480 Mbps
15W | Aluminum, Nickel-Plated
Available Color: Space Gray

Charging, Data Transfer, and OTG Support



CA465B

Lightning to Micro-USB Adapter

Lightning F/Micro-USB M
Straight Connector, with lanyard hole
Bandwidth: 480 Mbps
15W | Aluminum, Nickel-Plated
Available Color: Space Gray

Charging, Data Transfer, and OTG Support



CA491AM

USB-C to HDMI Adapter L-Type

USB-C/HDMI FN52-grade neodymium magnet Connector,
Straight-to-Center-Symmetrical 90° Connector
Bandwidth: 18 Gbps
Maximum video resolution: 4K@60Hz
Aluminum shell, Gold-plated
Available Colors: Space Gray



CA492AM

USB-C to DP Adapter, 8K

USB-CM/DPF
N52-grade neodymium magnet Connector,
Straight-to-Center-Symmetrical 90° Connector
Bandwidth: 32.4 Gbps
Maximum video resolution: 8K@30Hz
Aluminum shell, Gold-plated
Available Color: Space Gray



CA493AM

USB-C to Mini-DP Adapter, 8K

USB-CM/Mini-DP F
N52-grade neodymium magnet Connector,
Straight-to-Center-Symmetrical 90° Connector
Bandwidth: 32.4 Gbps
Maximum video resolution: 8K@30Hz
Aluminum shell, Gold-plated
Available Color: Space Gray



CA494AM

USB-C to VGA Adapter

USB-CM/VGA F
N52-grade neodymium magnet Connector,
Straight-to-Center-Symmetrical 90° Connector
Bandwidth: 5.4 Gbps
Maximum video resolution: 1080P@60Hz
Aluminum shell, Gold-plated
Available Color: Space Gray



CA495AM

USB-C to RJ45 Adapter, 1000 Mbps

USB-CM/RJ45 F
N52-grade neodymium magnet Connector,
Straight-to-Center-Symmetrical 90° Connector
Bandwidth: 1000 Mbps
Aluminum shell, Gold-plated
Available Color: Space Gray



CA496AM

USB-C to USB-A Adapter, 15W, 10 Gbps

USB-CM/AF
N52-grade neodymium magnet Connector,
Straight-to-Center-Symmetrical 90° Connector
Bandwidth: 10 Gbps
Aluminum shell, Gold-plated
Available Color: Space Gray



CA446D

USB-C to USB-C Adapter L-Type, 240W, 480Mbps

USB-CF/M
360° Rotating Interface + 180° Rotating Elbow Dual-Axis Rotating Connector, with Indicator
Bandwidth: 480 Mbps
240W | Aluminum shell, Nickel-Plated
Available Colors: Black
Net weight: 4g
Charging, Data Transfer, and OTG Support



CA446E

USB-C to USB-C Adapter L-Type, 240W, 480Mbps

USB-CF/M
180° Rotating Elbow Rotating Connector, with Indicator
Bandwidth: 480 Mbps
240W | Aluminum shell, Nickel-Plated
Available Colors: Space Gray
Net weight: 4g
Charging, Data Transfer, and OTG Support



DU706

DC Power to USB-CM Converter 140W

lenovo DC/USB-CM
140W | Aluminum, Nickel-Plated
Available Color: Space Gray



DU708

DC Power to USB-CM Converter 140W

4.5*0.6DC/USB-CM
140W | Aluminum, Nickel-Plated
Available Color: Space Gray



DU703

Modular DC to USB-C Power Converter 65W

Modular DC/USB-CM L-Type Connector
DC Heads (6 Types):
• M (Square Head): 11.0x4.5mm - LENOVO
• K (7909): 7.9x0.9mm for IBM/LENOVO
• I (7450): 7.4x5.0mm for DELL/HP
• C (5525): 5.5x2.5mm for ASUS/IBM/HP/FUJITSU
• O (4530): 4.5x3.0mm for DELL/HP
• G (4017): 4.0x1.7mm for ASUS/BENQ/ACER/SONY
L=0.2m
65W (Rated Current: 3.25A-3.5A)
Aluminum shell, Nickel-Plated
Available Color: Red, Black, White



DU707

DC Power to USB-CM Converter 140W

7.4*0.6DC/USB-CM
140W | Aluminum, Nickel-Plated
Available Color: Space Gray



DU709

DC Power to USB-CM Converter 140W

5.5*2.1DC/USB-CM
140W | Aluminum, Nickel-Plated
Available Color: Space Gray



ENJOY **16K** VISUAL EXPERIENCE



CG852

HDMI 2.1 8K Ultra-Thin Coaxial Cable

Cable Construction: {38AWG(7/0.04)1C+SP34/0.032TC}8Coac + 34AWG(7/0.06TC)*6C + SP(95/0.05TC)

OD: 2.5mm

Supported : 8K@60Hz (7680×4320) within 1-2 meters, compliant with HDMI 2.1 standard

Bandwidth: Up to 48Gbps (HDMI 2.1 standard)



CG854

Micro HDMI to HDMI 2.1 8K Ultra-Thin Coaxial Cable (Type D Connector)

Cable Construction: {38AWG(7/0.04)1C+SP34/0.032TC}8Coac + 34AWG(7/0.06TC)*6C + SP(95/0.05TC)

OD: 2.5mm

Supported : 8K@60Hz (7680×4320) within 1-2 meters, compliant with HDMI 2.1 standard

Bandwidth: Up to 48Gbps (HDMI 2.1 standard)



CG582RB

HDMI 2.1 8K Downward-Angle Ultra-Thin Coaxial Cable

Cable Construction: {38AWG(7/0.04)1C+SP34/0.032TC}8Coac + 34AWG(7/0.06TC)*6C + SP(95/0.05TC)

OD: 2.5mm

Supported : 8K@60Hz (7680×4320) within 1-2 meters, compliant with HDMI 2.1 standard

Bandwidth: Up to 48Gbps (HDMI 2.1 standard)



CG582RD

HDMI 2.1 8K Right-Angle Ultra-Thin Coaxial Cable

Cable Construction: {38AWG(7/0.04)1C+SP34/0.032TC}8Coac + 34AWG(7/0.06TC)*6C + SP(95/0.05TC)

OD: 2.5mm

Supported : 8K@60Hz (7680×4320) within 1-2 meters, compliant with HDMI 2.1 standard

Bandwidth: Up to 48Gbps (HDMI 2.1 standard)



CG853

Mini HDMI to HDMI 2.1 8K Ultra-Thin Coaxial Cable

Cable Construction: {38AWG(7/0.04)1C+SP34/0.032TC}8Coac + 34AWG(7/0.06TC)*6C + SP(95/0.05TC)

OD: 2.5mm

Supported : 8K@60Hz (7680×4320) within 1-2 meters, compliant with HDMI 2.1 standard

Bandwidth: Up to 48Gbps (HDMI 2.1 standard)



CG582RA

HDMI 2.1 8K Upward-Angle Ultra-Thin Coaxial Cable

Cable Construction: {38AWG(7/0.04)1C+SP34/0.032TC}8Coac + 34AWG(7/0.06TC)*6C + SP(95/0.05TC)

OD: 2.5mm

Supported : 8K@60Hz (7680×4320) within 1-2 meters, compliant with HDMI 2.1 standard

Bandwidth: Up to 48Gbps (HDMI 2.1 standard)



CG582RC

HDMI 2.1 8K Left-Angle Ultra-Thin Coaxial Cable

Cable Construction: {38AWG(7/0.04)1C+SP34/0.032TC}8Coac + 34AWG(7/0.06TC)*6C + SP(95/0.05TC)

OD: 2.5mm

Supported : 8K@60Hz (7680×4320) within 1-2 meters, compliant with HDMI 2.1 standard

Bandwidth: Up to 48Gbps (HDMI 2.1 standard)



CG582RE

HDMI 2.1 8K Left-Angle to Right-Angle Ultra-Thin Coaxial Cable

Cable Construction: {38AWG(7/0.04)1C+SP34/0.032TC}8Coac + 34AWG(7/0.06TC)*6C + SP(95/0.05TC)

OD: 2.5mm

Supported : 8K@60Hz (7680×4320) within 1-2 meters, compliant with HDMI 2.1 standard

Bandwidth: Up to 48Gbps (HDMI 2.1 standard)



D3743G

HDMI 2.1 Fire-Resistant Fiber Optic Cable, 8K, 48Gbps

HDMI M/M
Straight Connector
Supports: 8K@60Hz
Bandwidth: 48 Gbps



D3743E

HDMI High-Speed Fiber Optic Cable, 8K, 48Gbps

HDMI M/M
Straight Connector
Supports: 8K@60Hz
Bandwidth: 48 Gbps



CG810C

HDMI 2.1 8K Cable

HDMI M/M
Straight Connector
Supports: 8K@60Hz
Gold-Plated Connectors
Aluminum Alloy Shell + Nylon Braided Cable Core 19+1
OD=5.3



D3746

HDMI 2.2 Fiber Optic Cable, 16K, 96Gbps

HDMI M/M
Straight Connector
Supports: 16K@60Hz
Bandwidth: 96 Gbps
L=1m
OD=4.4mm
Zinc Alloy + PVC
Gold-Plated Connectors
Available Colors: Black



D3743D

HDMI Fiber Optic Cable, 8K, 48Gbps

HDMI M/M
Straight Connector
Supports: 8K@60Hz
Bandwidth: 48 Gbps



D3743F

HDMI Industrial-Grade Fiber Optic Cable, 8K, 48Gbps

HDMI M/M
Straight Connector
Supports: 8K@60Hz
Bandwidth: 48 Gbps



CG868B

HDMI 2.2 16K Cable

HDMI M/M
Straight Connector
Supports: 16K@60Hz
Gold-Plated Connectors
Deep Space Grey Aluminum Alloy Shell
+ Black-Grey Braided Cable
Core: 19+1



CG810G

HDMI 2.1 8K Cable

HDMI M/M
Straight Connector
Supports: 8K@60Hz
Gold-Plated Connectors
Aluminum Alloy Shell + Nylon Braided Cable 19+1
OD=5.3





8K Ultra HD
Adapter

CA353

HDMI 2.1 Female to Female Extension Coupler/Adapter

HDMI F/HDMI F (Type A)
Maximum video resolution:8K@60Hz, 4K@120Hz
Bandwidth: 48 Gbps
Aluminum shell,Gold-plated
HDMI 2.1 Compliant



CA354RA

HDMI 2.1 Male to Female upright L-Type Extension Coupler/Adapter

HDMI M/F Right Angle (Type A)
Maximum video resolution:8K@60Hz, 4K@120Hz
Bandwidth: 48 Gbps
Aluminum shell,Gold-plated
HDMI 2.1 Compliant



CA355

Micro-HDMI 2.1 Male to HDMI Female Adapter

Micro-HDMI M/HDMI F
Maximum video resolution:8K@60Hz, 4K@120Hz
Bandwidth: 48 Gbps
Aluminum shell,Gold-plated
HDMI 2.1 Compliant



CA354RC

HDMI 2.1 Male to Female L-Type Extension Coupler/Adapter

HDMI M/F Center Symmetrical Right Angle (Type A)
Maximum video resolution:8K@60Hz, 4K@120Hz
Bandwidth: 48 Gbps
Aluminum shell,Gold-plated
HDMI 2.1 Compliant



CA354

HDMI 2.1 Male to Female Extension Coupler/Adapter

HDMI M/F (Type A)
Maximum video resolution:8K@60Hz, 4K@120Hz
Bandwidth: 48 Gbps
Aluminum shell,Gold-plated
HDMI 2.1 Compliant



CA354RB

HDMI 2.1 Male to Female reversed L-Type Extension Coupler/Adapter

HDMI M/F Reversed Right Angle (Type A)
Maximum video resolution:8K@60Hz, 4K@120Hz
Bandwidth: 48 Gbps
Aluminum shell,Gold-plated
HDMI 2.1 Compliant



CA356

Mini-HDMI 2.1 Male to HDMI Female Adapter

Mini-HDMI M/HDMI F
Maximum video resolution:8K@60Hz, 4K@120Hz
Bandwidth: 48 Gbps
Aluminum shell,Gold-plated
HDMI 2.1 Compliant



CA354RD

HDMI 2.1 Male to Female L-Type reversed Extension Coupler/Adapter

HDMI M/F Reversed Center Symmetrical Right Angle (Type A)
Maximum video resolution:8K@60Hz, 4K@120Hz
Bandwidth: 48 Gbps
Aluminum shell,Gold-plated
HDMI 2.1 Compliant



CA352

HDMI 2.1 Female to Female Extension Coupler/Adapter

HDMI F/HDMI F (Type A)
Maximum video resolution: 8K@60Hz, 4K@120Hz
Bandwidth: 48 Gbps
Aluminum shell, Gold-plated
HDMI 2.1 Compliant

8K
60Hz



CA358

Mini-HDMI 2.1 Male to HDMI Female Adapter

Mini-HDMI M/HDMI F
Maximum video resolution: 8K@60Hz, 4K@120Hz
Bandwidth: 48 Gbps
Aluminum shell, Gold-plated
HDMI 2.1 Compliant

8K
60Hz



CA351

DP 1.4 Male to HDMI 2.1 Female Adapter

DisplayPort M/HDMI F
Maximum video resolution: 8K@60Hz
Bandwidth: 32.4 Gbps
Aluminum shell, Gold-plated
DisplayPort 1.4 and HDMI 2.1 Compliant

8K
60Hz



CA458

USB-C Female to DP 1.4 Male Adapter

USB USB-C M/DisplayPort M
Maximum video resolution: 8K@60Hz
Bandwidth: 32.4 Gbps
Aluminum shell, Gold-plated
DisplayPort Alt Mode, USB USB-C Specification, and I

8K
60Hz



CA357

HDMI 2.1 Male to Female Extension Coupler/Adapter

HDMI M/F (Type A)
Maximum video resolution: 8K@60Hz, 4K@120Hz
Bandwidth: 48 Gbps
Aluminum shell, Gold-plated
HDMI 2.1 Compliant

8K
60Hz



CA359

Micro-HDMI 2.1 Male to HDMI Female Adapter

Micro-HDMI M/HDMI F
Maximum video resolution: 8K@60Hz, 4K@120Hz
Bandwidth: 48 Gbps
Aluminum shell, Gold-plated
HDMI 2.1 Compliant

8K
60Hz



CA455

USB-C Female to HDMI 2.1 Male Adapter

USB USB-C F/HDMI M
Maximum video resolution: 8K@60Hz
Bandwidth: 32.4 Gbps
Aluminum shell, Gold-plated
DisplayPort Alt Mode, USB USB-C 1.4 and HDMI 2.1

8K
60Hz



CA459

USB-C Male to HDMI 2.1 Female Adapter

USB USB-C M/HDMI F
Maximum video resolution: 8K@60Hz
Bandwidth: 32.4 Gbps
Aluminum shell, Gold-plated
DisplayPort Alt Mode, USB USB-C Specification, and HDMI 2.1 Compliant

8K
60Hz



DU705

HDMI Virtual Monitor EDID Emulator with Indicator

HDMI M/Headless
Straight Connector, with Indicator & Lanyard hole
with Built-in EDID Emulation
Maximum video resolution: 4K@60Hz
Bandwidth: 18 Gbps
Aluminum shell, Gold-plated
Available Colors: Space Gray



- Enables headless operation for high-resolution remote desktop access.
- Activates GPU for computational tasks like mining and rendering.
- Tricks the system into detecting a display to unlock full graphics performance.

CA361CM

HDMI to HDMI 2.1 Adapter 8K

HDMI M/F (Type A)
N52-grade neodymium magnet Connector, Straight-to-Center-Symmetrical 90° Connector,
with Indicator Maximum video resolution: 8K@60Hz, 4K@120Hz
Bandwidth: 48 Gbps
Aluminum shell, Gold-plated
HDMI 2.1 Compliant
Available Colors: Space Gray
Net weight: 14g



CA361AM

HDMI to HDMI 2.1 Adapter 8K

HDMI M/F (Type A)
N52-grade neodymium magnet Straight Connector, with Indicator
Maximum video resolution: 8K@60Hz, 4K@120Hz
Bandwidth: 48 Gbps
Aluminum shell, Gold-plated
HDMI 2.1 Compliant
Available Colors: Space Gray
Net weight: 14g



CA361DM

HDMI to HDMI 2.1 Adapter L-Type 8K

HDMI M/F (Type A)
N52-grade neodymium magnet Connector, Straight-to-Right-Angle 90° Connector, with Indicator
Maximum video resolution: 8K@60Hz, 4K@120Hz
Bandwidth: 48 Gbps
Aluminum shell, Gold-plated
HDMI 2.1 Compliant
Available Colors: Space Gray
Net weight: 14g



DU705b

HDMI Virtual Monitor EDID Emulator

HDMI M/Headless
Straight Connector, with Lanyard hole
with Built-in EDID Emulation
Maximum video resolution: 4K@60Hz
Bandwidth: 18 Gbps
Aluminum shell, Gold-plated
Available Colors: Space Gray



- Enables headless operation for high-resolution remote desktop access.
- Activates GPU for computational tasks like mining and rendering.
- Tricks the system into detecting a display to unlock full graphics performance.

CA361BM

HDMI to HDMI 2.1 Adapter 8K

HDMI M/F (Type A)
N52-grade neodymium magnet Connector, Straight-to-Center-Symmetrical 270°, with Indicator
Maximum video resolution: 8K@60Hz, 4K@120Hz
Bandwidth: 48 Gbps
Aluminum shell, Gold-plated
HDMI 2.1 Compliant
Available Colors: Space Gray
Net weight: 14g



CA361EM

HDMI to HDMI 2.1 Adapter L-Type 8K

HDMI M/F (Type A)
N52-grade neodymium magnet Connector, Straight-to-Right-Angle 90° Connector, with Indicator
Maximum video resolution: 8K@60Hz, 4K@120Hz
Bandwidth: 48 Gbps
Aluminum shell, Gold-plated
HDMI 2.1 Compliant
Available Colors: Space Gray
Net weight: 14g



CA361FM

HDMI to HDMI 2.1 Adapter L-Type 8K

HDMI M/F (Type A)
N52-grade neodymium magnet Connector, Straight-to-Right-Angle 90° Connector, with Indicator
Maximum video resolution: 8K@60Hz, 4K@120Hz
Bandwidth: 48 Gbps
Aluminum shell, Gold-plated
HDMI 2.1 Compliant
Available Colors: Space Gray
Net weight: 21g



CA361GM

HDMI to HDMI 2.1 Adapter L-Type 8K

HDMI M/F (Type A)
 N52-grade neodymium magnet Connector, Straight-to-Right-Angle 90° Connector, with Indicator
 Maximum video resolution: 8K@60Hz, 4K@120Hz
 Bandwidth: 48 Gbps
 Aluminum shell, Gold-plated
 HDMI 2.1 Compliant
 Available Colors: Space Gray
 Net weight: 21g



CA361JM

HDMI to HDMI 2.1 Adapter L-Type 8K

HDMI M/F (Type A)
 N52-grade neodymium magnet Connector, Straight-to-Right-Angle 90° Connector, with Indicator
 Maximum video resolution: 8K@60Hz, 4K@120Hz
 Bandwidth: 48 Gbps
 Aluminum shell, Gold-plated
 HDMI 2.1 Compliant
 Available Colors: Space Gray
 Net weight: 18g



CA362B

Micro-HDMI to HDMI 2.1 Adapter L-Type 8K

Micro-HDMI M/HDMI F
 Straight-to-Center-Symmetrical 90° Connector, with Indicator & Lanyard hole
 Maximum video resolution: 8K@60Hz, 4K@120Hz
 Bandwidth: 48 Gbps
 Aluminum shell, Gold-plated
 Available Colors: Transparent, Smoke Black, Blue
 Compliance: HDMI 2.1 Standard



CA362D

Micro-HDMI to HDMI 2.1 Adapter L-Type 8K

Micro-HDMI M/HDMI F
 Straight-to-Right-Angle 90° Connector, with Indicator & Lanyard hole
 Maximum video resolution: 8K@60Hz, 4K@120Hz
 Bandwidth: 48 Gbps
 Aluminum shell, Gold-plated
 Available Colors: Transparent, Smoke Black, Blue
 Compliance: HDMI 2.1 Standard



CA361HM

HDMI to HDMI 2.1 Adapter L-Type 8K

HDMI M/F (Type A)
 N52-grade neodymium magnet Connector, Straight-to-Right-Angle 90° Connector, with Indicator
 Maximum video resolution: 8K@60Hz, 4K@120Hz
 Bandwidth: 48 Gbps
 Aluminum shell, Gold-plated
 HDMI 2.1 Compliant
 Available Colors: Space Gray
 Net weight: 18g



CA362A

Micro-HDMI to HDMI 2.1 Adapter 8K

Micro-HDMI M/HDMI F
 Straight Connector, with Indicator
 Maximum video resolution: 8K@60Hz, 4K@120Hz
 Bandwidth: 48 Gbps
 Aluminum shell, Gold-plated
 Available Colors: Transparent, Smoke Black, Blue
 Compliance: HDMI 2.1 Standard



CA362C

Micro-HDMI to HDMI 2.1 Adapter L-Type 8K

Micro-HDMI M/HDMI F
 Straight-to-Center-Symmetrical 90° Connector, with Indicator & Lanyard hole
 Maximum video resolution: 8K@60Hz, 4K@120Hz
 Bandwidth: 48 Gbps
 Aluminum shell, Gold-plated
 Available Colors: Transparent, Smoke Black, Blue
 Compliance: HDMI 2.1 Standard



CA362F

Micro-HDMI to HDMI 2.1 Adapter L-Type 8K

Micro-HDMI M/HDMI F
 Straight-to-Right-Angle 90° Connector, with Indicator & Lanyard hole
 Maximum video resolution: 8K@60Hz, 4K@120Hz
 Bandwidth: 48 Gbps
 Aluminum shell, Gold-plated
 Available Colors: Transparent, Smoke Black, Blue
 Compliance: HDMI 2.1 Standard



CA363A

Mini-HDMI to HDMI 2.1 Adapter 8K

Mini-HDMI M/HDMI F
Straight Connector,with Indicator& Lanyard hole
Maximum video resolution:8K@60Hz, 4K@120Hz
Bandwidth: 48 Gbps
Aluminum shell,Gold-plated
Available Colors:Transparent, Smoke Black, Blue
Compliance: HDMI 2.1 Standard



CA363C

Mini-HDMI to HDMI 2.1 Adapter L-Type 8K

Mini-HDMI M/HDMI F
Straight-to-Center-Symmetrical 90° Connector,with Indicator& Lanyard hole
Maximum video resolution:8K@60Hz, 4K@120Hz
Bandwidth: 48 Gbps
Aluminum shell,Gold-plated
Available Colors:Transparent, Smoke Black, Blue
Compliance: HDMI 2.1 Standard



CA363E

Mini-HDMI to HDMI 2.1 Adapter L-Type 8K

Mini-HDMI M/HDMI F
Straight-to-Right-Angle 90° Connector,with Indicator& Lanyard
Maximum video resolution:8K@60Hz, 4K@120Hz
Bandwidth: 48 Gbps
Aluminum shell,Gold-plated
Available Colors:Transparent, Smoke Black, Blue
Compliance: HDMI 2.1 Standard



CA364C

Mini-HDMI to HDMI 2.1 Adapter U-Shaped 8K

Mini-HDMI M/HDMI F
U-Shaped Connector
Maximum video resolution:8K@60Hz, 4K@120Hz
Bandwidth: 48 Gbps
PC,Gold-plated
Available Colors:Transparent, Smoke Black, Blue
Compliance: HDMI 2.1 Standard



CA363B

Mini-HDMI to HDMI 2.1 Adapter L-Type 8K

Mini-HDMI M/HDMI F
Straight-to-Center-Symmetrical 90° Connector,with Indicator&
Maximum video resolution:8K@60Hz, 4K@120Hz
Bandwidth: 48 Gbps
Aluminum shell,Gold-plated
Available Colors:Transparent, Smoke Black, Blue
Compliance: HDMI 2.1 Standard



CA363D

Mini-HDMI to HDMI 2.1 Adapter L-Type 8K

Mini-HDMI M/HDMI F
Straight-to-Right-Angle 90° Connector,with Indicator& Lanyard hole
Maximum video resolution:8K@60Hz, 4K@120Hz
Bandwidth: 48 Gbps
Aluminum shell,Gold-plated
Available Colors:Transparent, Smoke Black, Blue
Compliance: HDMI 2.1 Standard



CA364B

Mini-HDMI to HDMI 2.1 Adapter U-Shaped 8K

Mini-HDMI M/HDMI F
U-Shaped Connector
Maximum video resolution:8K@60Hz, 4K@120Hz
Bandwidth: 48 Gbps
PC,Gold-plated
Available Colors:Transparent, Smoke Black, Blue
Compliance: HDMI 2.1 Standard



CA364D

Mini-HDMI to HDMI 2.1 Adapter U-Shaped 8K

Mini-HDMI M/F
U-Shaped Connector,with Indicator
Maximum video resolution:8K@60Hz, 4K@120Hz
Bandwidth: 48 Gbps
PC,Gold-plated
Available Colors:Transparent, Smoke Black, Blue
Compliance: HDMI 2.1 Standard



CA364E

Mini-HDMI to HDMI 2.1 Adapter U-Shaped 8K

Mini-HDMI M/F
 U-Shaped Connector, with Indicator
 Maximum video resolution: 8K@60Hz, 4K@120Hz
 Bandwidth: 48 Gbps
 PC, Gold-plated
 Available Colors: Transparent, Smoke Black, Blue
 Compliance: HDMI 2.1 Standard



CA364F

Mini-HDMI to HDMI 2.1 Adapter 8K

HDMI F/Mini-HDMI F
 Straight Connector, with Indicator
 Maximum video resolution: 8K@60Hz, 4K@120Hz
 Bandwidth: 48 Gbps
 Aluminum shell, Gold-plated
 Available Colors: Transparent, Smoke Black, Blue
 Compliance: HDMI 2.1 Standard



CA364A

Mini-HDMI to HDMI 2.1 Adapter 8K

HDMI M/Mini-HDMI F
 Straight Connector, with Indicator
 Maximum video resolution: 8K@60Hz, 4K@120Hz
 Bandwidth: 48 Gbps
 Aluminum shell, Gold-plated
 Available Colors: Transparent, Smoke Black, Blue
 Compliance: HDMI 2.1 Standard



CA363D

Micro-HDMI to Mini-HDMI 2.1 Adapter 8K

Micro-HDMI M/Mini-HDMI F
 Straight Connector, with Indicator
 Maximum video resolution: 8K@60Hz, 4K@120Hz
 Bandwidth: 48 Gbps
 Aluminum shell, Gold-plated
 Available Colors: Transparent, Smoke Black, Blue
 Compliance: HDMI 2.1 Standard



D3743B

DP Fiber Optic Armored Cable
8K
48Gbps

DP M/M
Straight Connector
Supports: 8K@60Hz
Bandwidth: 48 Gbps
L=1m
OD=5.7mm
Zinc Alloy Shell + Blue Transparent PVC Jacket
Gold-Plated Connectors



CG867F

HDMI 2.2 Extension Cable

HDMI Version: 2.2
Resolution: 16K@60Hz / 4K@480Hz
Bandwidth: 96Gbps



CG656A

Mini-HDMI to HDMI 2.1 Adapter L-Type 8K

DP M/M
Straight Connector
Supports: 16K@60Hz / 8K@60Hz
Bandwidth: 80Gbps
30AWG
19+1
OD=6.0mm
Gold-Plated Plug
Aluminum Shell + Nylon Braided Jacket
Construction: [(0.260BC+FP0.78)*1P+
(0.254BC+HDPE0.60)+Al/ML)*5C+(0.254BC+HDPE0.60)*4C
+AL+D0.254TC+B128/0.12AM+PVC+Nylon Braided
Length: 1m, 1.8m, 2m



CG656C

DisplayPort 2.1 16K Cable

DP M/M
Straight Connector
Supports: 16K
Space Gray Aluminum Alloy Shell + Grey-Blue Nylon Braided Core 19+1
OD=5.5mm



D3754

DP 2.1 Fiber Optic Cable
16K
40Gbps

DP M/M
Straight Connector
Supports: 16K@30Hz
Bandwidth: 40 Gbps
L=1m
OD=4.4mm
Zinc Alloy + PVC
Gold-Plated Connectors



CG867M

HDMI 2.2 Cable

HDMI Version: 2.2
Resolution: 16K@60Hz / 4K@480Hz
Bandwidth: 96Gbps



CG656B

DisplayPort 2.1 16K Cable

DP M/M
Straight Connector
Supports: 16K
Gold-Plated Plug
Aluminum Alloy Shell + Nylon Braided Cable
OD=6.5mm



CG624B

DisplayPort to HDMI Cable 8K@60Hz

DP/HDMI
Straight Connector
Supports: 8K@60Hz
30AWG
19+1
OD=5.5mm
Gold-Plated connector
Aluminum Shell
Braided
Construction: [(1/0.254BC*1P+D1/0.254BC+FAM)*5P+
1/0.254BC*3C+1/0.32BC*1C+FAM+D1/0.254BC+B128/0.12AM]
*1P+PVC OD5.5mm



CG624FA

DisplayPort to HDMI Adapter 8K@60Hz

DP/HDMI
Adapter
Supports: 8K@60Hz
30AWG
19+1
OD=5.5mm
Gold-Plated Connector
Aluminum Shell
Braided
Construction: [(1/0.254BC*1P+D1/0.254BC+FAM)
*5P+1/0.254BC*3C+1/0.32BC*1C
+FAM+D1/0.254BC+B128/0.12AM]*1P+PVC OD5.5mm



CG603A

DisplayPort to VGA Female Adapter

DP/VGA F
Adapter
Supports: 1080P@60Hz
30AWG
19+1
OD=5.5mm
Gold-Plated Terminal
Aluminum Shell
Braided
Construction: [(0.254BC+FP0.72)*1P+AI/MI]*5C
+(0.254BC+HDPE0.60)*5C+AL+D0.254BC
+B64/0.12AM+PVC5.5mmvv



CG624FB

DisplayPort to HDMI Adapter 4K@60Hz

DP/HDMI
Straight Connector
Supports: 4K@60Hz
30AWG
19+1
OD=6.0mm
Gold-Plated Terminal
Aluminum Shell
Braided
Construction: [(1/0.254BC*1P+D1/0.254BC+FAM)
*5P+1/0.254BC*3C+1/0.32BC*1C+FAM+D1/0.254BC
+B128/0.12AM]*1P+PVC OD5.5mm
Length: 1-3m



CG626A

DP 2.1 Fiber Optic Cable
16K
40Gbps

DP M/M
Straight Connector
Supports: 16K@30Hz
Bandwidth: 40 Gbps
L=1m
OD=4.4mm
Zinc Alloy + PVC
Gold-Plated Connectors



CG624D

DisplayPort to HDMI Cable 4K@60Hz

DP/HDMI
Straight Connector
Supports: 4K@60Hz
30AWG
19+1
OD=6.0mm
Gold-Plated Terminal
Aluminum Shell
Braided
Construction: [(1/0.254BC*1P+D1/0.254BC+FAM)
*5P+1/0.254BC*3C+1/0.32BC*1C+FAM+D1/0.254BC
+B128/0.12AM]*1P+PVC OD5.5mm
Length: 1-3m



VCOM CAT8 Cable

The Latest and Fastest Cat8 Ethernet Cable



CAT8
40Gbps/2000Mhz

CAT7A
10Gbps/1000Mhz

CAT6
1Gbps/250Mhz

CAT5
1Gbps/100Mhz

NP833F

CAT8 Flat Ethernet Patch Cable

CAT8
Flat Patch Cable
30AWG
Stranded Pure Copper
Shielded RJ45 Connectors,
Gold-Plated Contacts
Note: 30AWG for 1-5M,
26AWG for 6-20M



NP835F

CAT8 Flat Ethernet Patch Cable

CAT8
Flat Patch Cable
30AWG
Stranded Pure Copper
Shielded RJ45 Connectors,
Gold-Plated Contacts
Note: 30AWG for 1-5M,
26AWG for 6-20M



NP836FA

CAT8 S/FTP Round Cable

CAT8
Round Cable
S/FTP
26# 7/0.16BC
OD=6.8mm
Gold-Plated connectors
Aluminum Casing
Braided
2000MHz / 40Gbps



NP834F

CAT8 Flat Ethernet Patch Cable

CAT8
Flat Patch Cable
30AWG
Stranded Pure Copper
Shielded RJ45 Connectors,
Gold-Plated Contacts
Note: 30AWG for 1-5M,
26AWG for 6-20M



NP836F

CAT8 S/FTP Round Cable

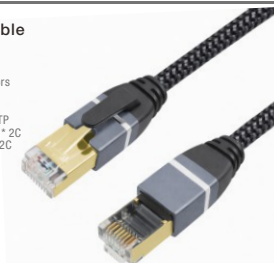
CAT8
Round Cable
S/FTP
26# 7/0.16BC
OD=6.8mm
Gold-Plated connectors
Aluminum Casing
Braided
2000MHz / 40Gbps



NP837F

CAT8 Flat Cable

CAT8
Flat Cable
Gold-Plated connectors
Aluminum Casing
Braided
Construction: CAT8 FTP
(1P*30AWG + D + AL) * 2C
+ (1P*30AWG + AL) * 2C
+ PVC
OD=2.8*8.5mm
2000MHz / 40Gbps





www.vcom.com.hk 

VCOM INTERNATIONAL LTD.

Head Quarter

> 8th Floor, No. 12 Dongxuan Road, Huangpu District, Guangzhou
City, Guangdong Province, China

Cable & Electronic Factory

> Xiaopenggang Industrial Zone, Longxi Town, Boluo District,
Huizhou City, Guangdong Province, China
Tel: +86-752-6873123 Fax: +86-752-6873155